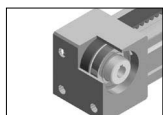
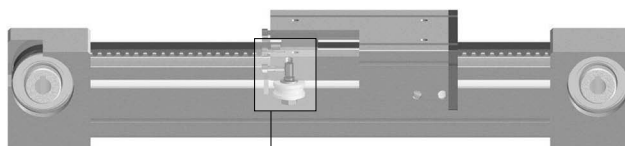
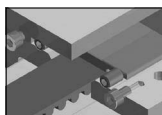


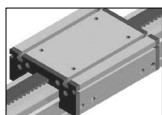
# MB series



Various axis combination are available and easy maintenance



Improved RPP timing belt

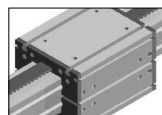


**MB 40/60/80/100**

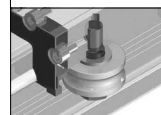
Basic slider block

- \* Various length of slider based on customer's needs are available.
- \* Customized roller bearing is available

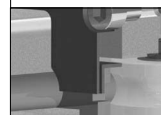
S: Standard slider block  
H: Standard slider + 4 rollers



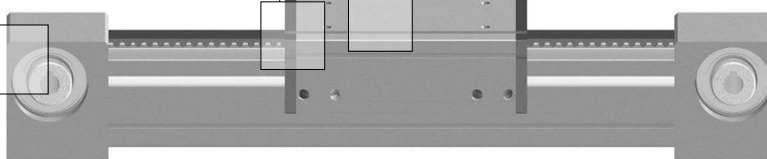
**MB 40/60/80/100-D**  
(Customized type)

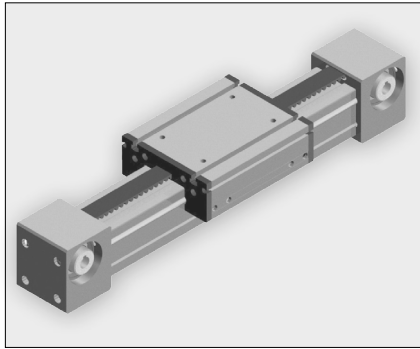


Using high-quality of bearing steel shaft



- Felt wiper prevents stiffening after long time of operation
- Spring inside of seal keeps certain level of frictional resistance





### Features

- Track roller guide & Belt type unit
- Various axis combination
- High tensile timing belt
- Customized optoin
- Easy maintenance

### How to order

① MB
② 40
③ S
④ — 600 —
⑤ 0011
⑥ —
⑦ C
⑧ — D3 —
⑨ E2
⑩ —

① Sereis

② Model

30 / 40 / 60 / 80 / 100

③ Block(slider)

S : Standard(4 roller bearings)

T : S + 2 additional bearings

H : S + 4 additional bearings

※ Please contact us for additional quantity of slider

④ Stroke(Unit : mm)

30 : 50 ~ 2800

40 : 50 ~ 3500

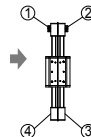
60 / 80 / 100 : 50 ~ 5500

※ Please contact us for longer stroke than standard

⑤ Drive version (0:Standard,1:Coupling type 2:Shaft type)

TYPE	Pulley direction	Pulley shape	MODEL			
			30	40	80	100
0100	□	□		●	●	●
1100	□	□		●	●	●
2000	□	□	●	●	●	●
2200	□	□	●	●	●	●
1200	□	□	●	●	●	●

※ Please contact us for customized pulley type



⑥ Color

Blank : White(outer)

L : White + LM raydent

B : Black (outer)

BL : Black(outer) + LM raydent

⑦ Sensor (dog included)

Blank : None

C : Photo sensor + Basic socket – Basic 3EA

CJ : C + Cable socket 2M – Basic 3EA

Other than basic : C(J(Q'ty) Example)C2,CJ2

⑧ Mounting bracket

Blank : None

D(Q'ty) necessary quantity. Example)D2,D3

⑨ Bracket of reducer (including coupling)

Blank : None

SYMBOL	TYPE	SIZE	MODEL			
			30	40	80	100
E1	42		●			
E2	62				●	●
E3	90				●	●
E4	120				●	●

Basic option : ATG, APLUS, SESAME

⑩ Customized code

### Sensor

Model	Item number	Sensor and connector
30	SX671-PL	 EE-SX671 + EE1001
40		
60		
80		
100		
30	SX671-L-PL	 EE-SX671 + EE1006
40		
60		
80		
100		

### Sensor dog

Model	Item number	Remarks
30	PDG-M30-PL	SX672-PL
40	PDG-M40-PL	
60	PDG-M60-PL	
80	PDG-M80-PL	
100	PDG-M100-PL	

### Sensor bracket

Model	Photo sensor for single	Photo sensor for double
30	PSBS-30-PL	PSBD-30-PL
40	PSBS-40-PL	PSBD-40-PL
60	PSBS-60-PL	PSBD-60-PL
80	PSBS-80-PL	PSBD-80-PL
100	PSBS-100-PL	PSBD-100-PL

### Mounting bracket

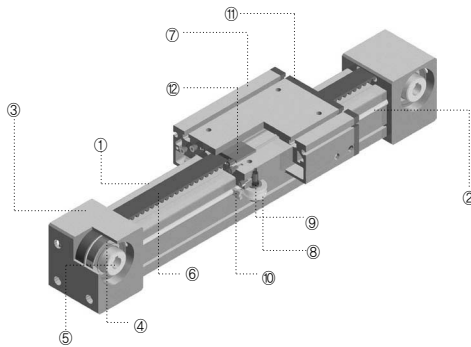
Model	Item number	Remarks
30	MBK30-PL	
40	MBK40-PL	
60	MBK60-PL	
80	MBK80-PL	
100	MBK100-PL	

MB specifications

Specification	MB30	MB40	MB60	MB80	MB100
Max speed (mm/s)	2000	2000	2000	2000	2000
Payload (kgf)	3 (horizontal)	10 (horizontal)	15 (horizontal)	40 (horizontal)	70 (horizontal)
Stroke (mm)	Max. 2800	Max. 3500	Max. 5500	Max. 5500	Max. 5500
Repeatability (mm)	± 0.05	± 0.05	± 0.05	± 0.05	± 0.05
Diameter of pulley (mm)	Ø 23.87	Ø 31.83	Ø 41.38	Ø 61.12	Ø 81.49
Pulley action perimeter (mm/rev)	75	100	130	192	256
No load torque (Nm)	0.2	0.3	0.6	0.9	1.4
Belt	S3M / W12	RPP5 / W15	RPP5 / W25	RPP8 / W30	RPP8 / W50
LM Guide	S: 4 roller bearing standard / T : S type + 2 roller bearing / H : S type + 4 roller bearing				
Basic weight (kgf)	1	2.1	5.6	12.9	28
Weight per 100mm stroke (kgf)	0.14	0.3	0.5	0.8	1.4
Motor (W)	100	100	200	400	750
Size (mm, W x H)	30 x 47	40 x 64	60 x 90	80 x 121	100 x 155

Note) Customized options such as motor, raydent and LM guide are available.

MB structure



► Component list

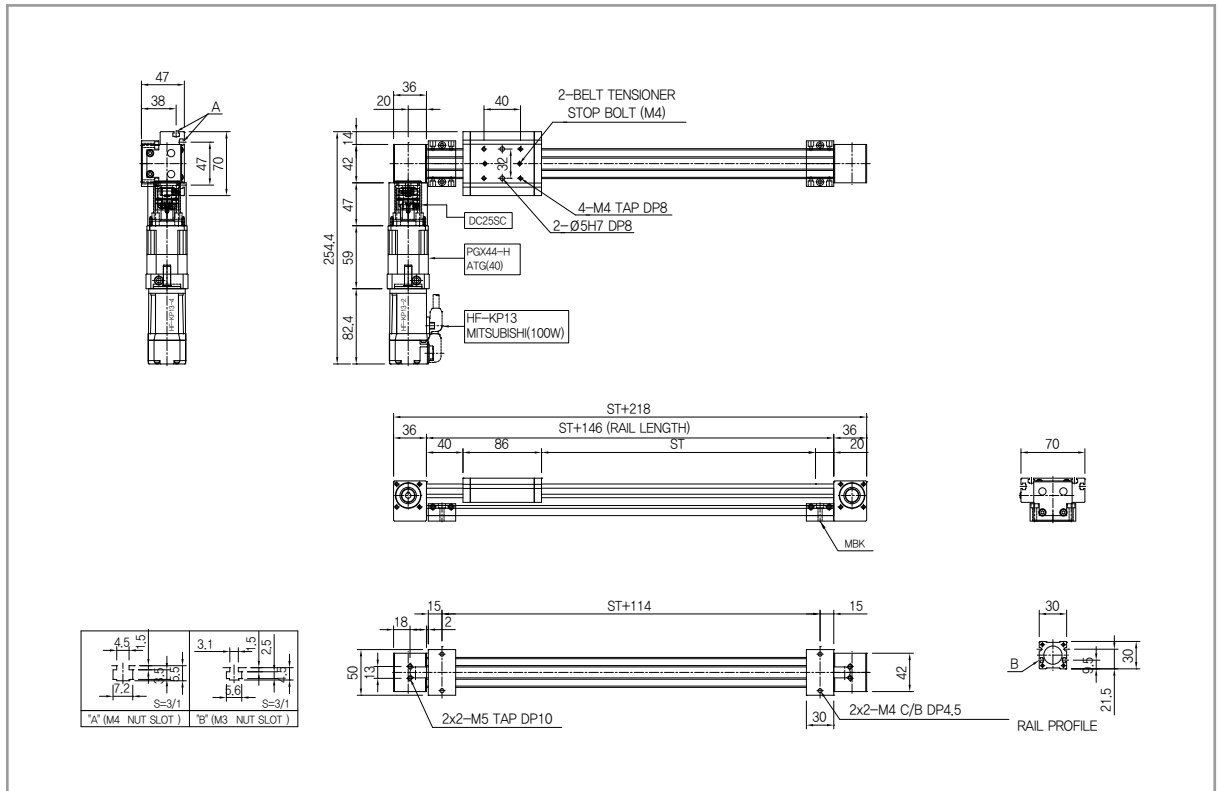
No	Component name		Material	No	Component name	Material
1	Rail		Aluminum alloy	7	Rail	Aluminum alloy
2	Model	Shaft	Bearing steel	8	Track roller	Bearing steel
	30	Ø4				
	40	Ø6				
	60	Ø10				
	80	Ø12				
	100	Ø16				
3	Pulley box		Aluminum alloy	9	Washer	-
4	Bearing		-	10	Wiper	FELT
5	Timing pulley		High carbon steel	11	Sealing	EP
6	Timing belt		Urethane	12	Belt clip	Carbon steel

# MB 30

## Basic specifications

Model	Stroke (mm)	Gear Ratio	Speed (mm/s)	Motor (W)	Max. Payload(kg)	
					Horizontal(0.3G)	Horizontal(0.5G)
MB30	50~2800	5	750	100	8	6
		3	1250		5	3

## MB30



- Please contact us to change sensor or motor options.
- Customized tap or pin pitch on the bottom is available.

## Weight & speed for each stroke

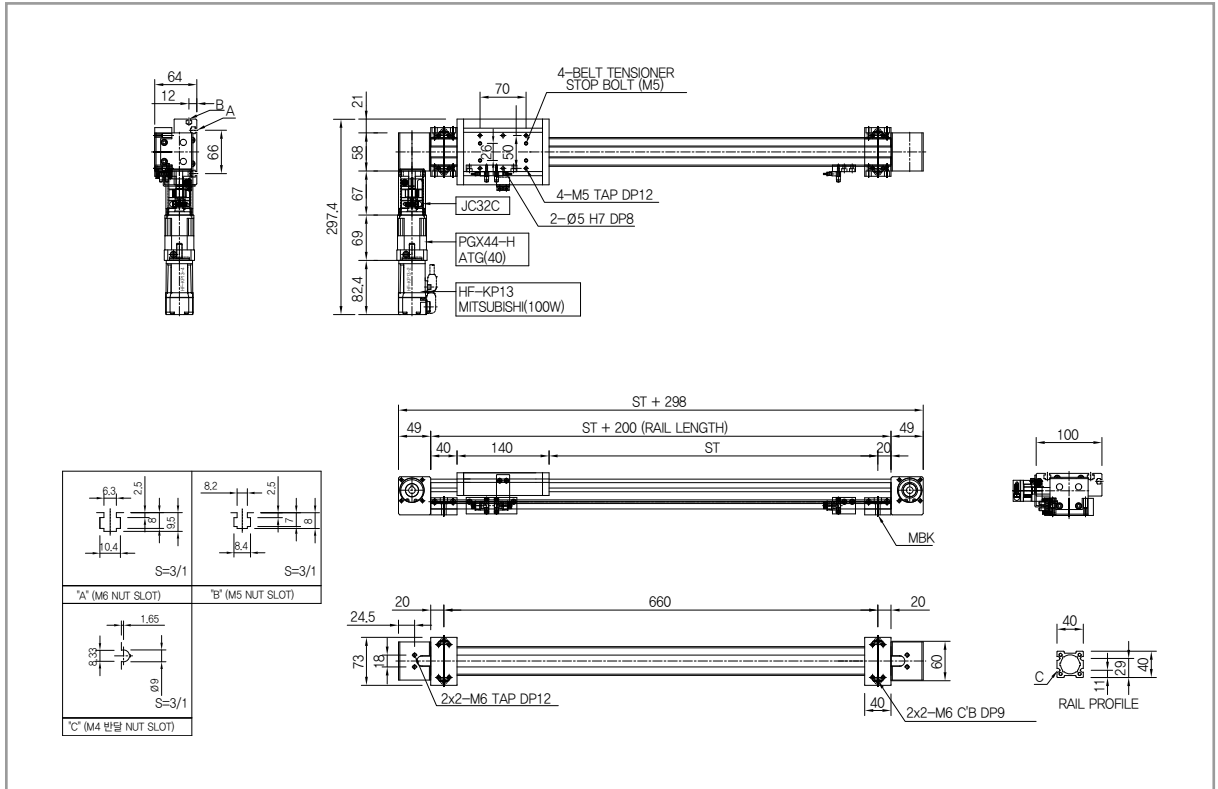
Stroke(mm)	1000	1100	1200	1300	1400	1500	1600	1700	1800	1900	2000	2200	2400	2600	2800	Gear ratio	Motor (W)
Weight(kg)	2.4	2.5	2.7	2.8	3.0	3.1	3.2	3.4	3.5	3.7	3.8	4.1	4.4	4.6	4.9		
Max. Speed (mm/s)															750	1250	3

Note) The weight of motor and reducer is not included.

Basic specifications

Model	Stroke (mm)	Gear Ratio	Speed (mm/s)	Motor (W)	Max. Payload(kg)	
					Horizontal(0.3G)	Horizontal(0.5G)
MB40	50~3500	10	500	100	25	20
		5	1000		9	9

MB40



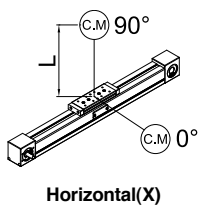
- Please contact us to change sensor or motor options.
- Customized tap or pin pitch on the bottom is available.

Weight & speed for each stroke

Stroke(mm)	1000	1100	1200	1300	1400	1500	1600	1700	1800	1900	2000	2200	2400	2600	2800	3000	Gear ratio	Motor (W)
Weight(kg)	5.1	5.4	5.7	6.0	6.3	6.6	6.9	7.1	7.4	7.7	8.0	8.6	9.2	9.8	10.4	11.0		
Max. Speed (mm/s)	500																10	100
	1000																5	

Note) The weight of motor and reducer is not included.

Allowable overhang distance



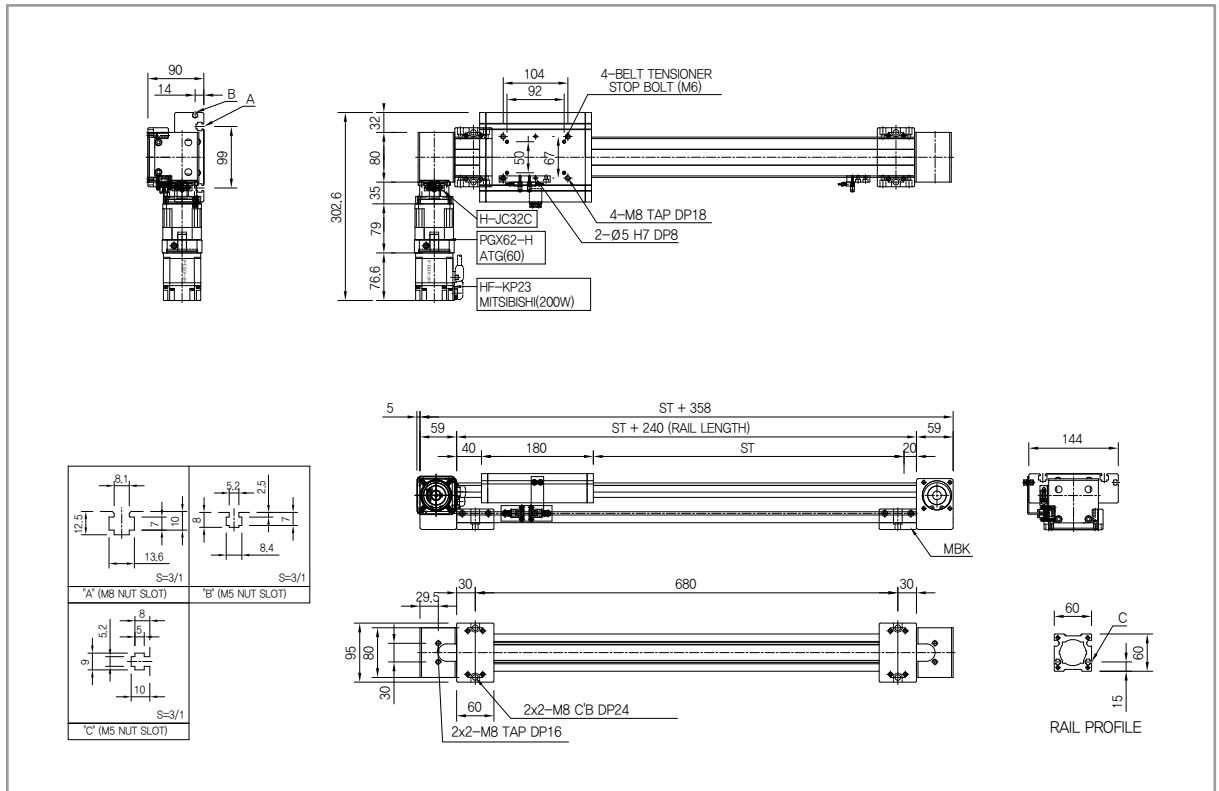
Gear Ratio	Payload	0°	90°
		10	24 kg
5	12 kg	70 mm	600 mm
	8kg	110 mm	500 mm
	4 kg	240 mm	1000 mm

# MB 60

## Basic specifications

Model	Stroke (mm)	Gear Ratio	Speed (mm/s)	Motor (W)	Max. Payload(kg)	
					Horizontal(0.3G)	Horizontal(0.5G)
MB60	50~5500	10	650	200	40	30
		5	1300		20	15

## MB60



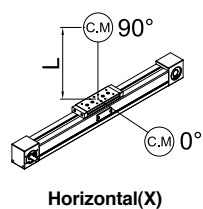
- Please contact us to change sensor or motor options.
- Customized tap or pin pitch on the bottom is available.

## Weight & speed for each stroke

Stroke(mm)	1000	1100	1200	1300	1400	1500	1600	1700	1800	1900	2000	2200	2400	2600	2800	3000	Gear ratio	Motor (W)
Weight(kg)	10.6	11.1	11.6	12.1	12.6	13.1	13.6	14.1	14.6	15.1	15.6	16.6	17.6	18.6	19.6	20.6		
Max. Speed (mm/s)	650																10	200
	1300																5	

Note) The weight of motor and reducer is not included.

## Allowable overhang distance

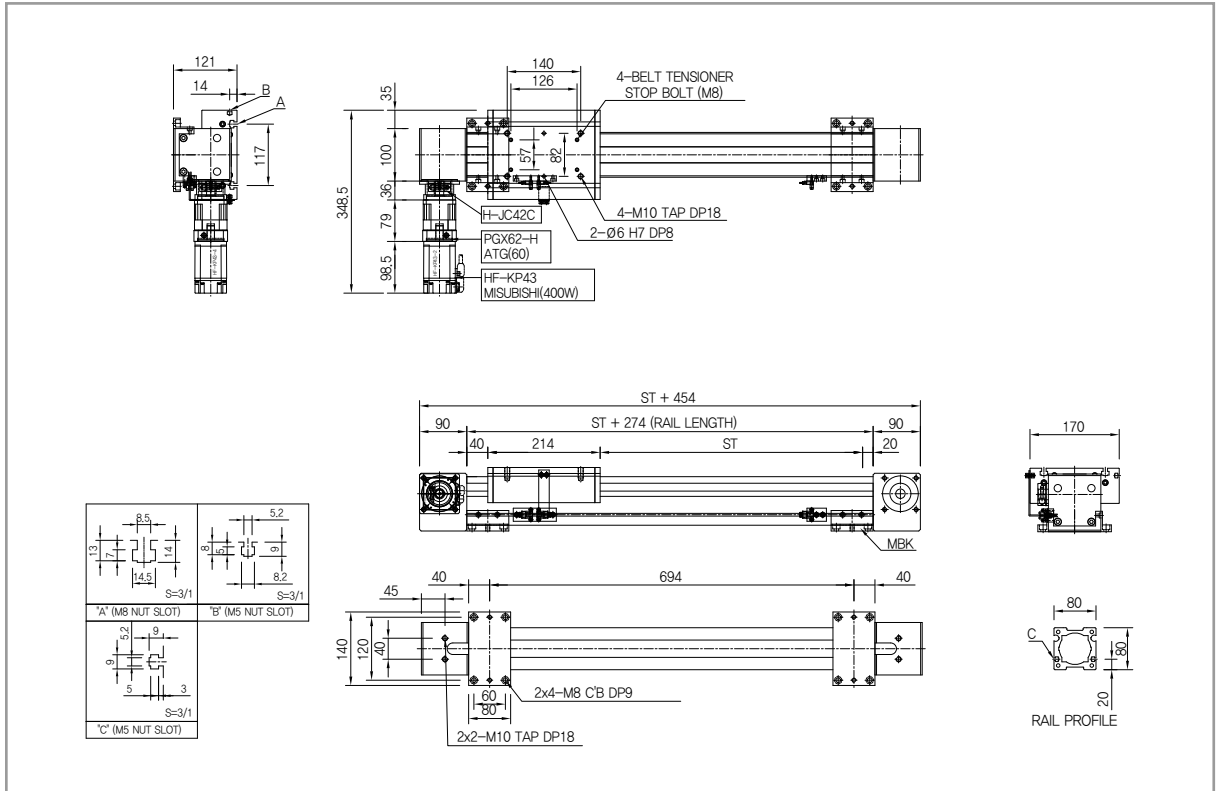


Gear Ratio	Payload	0°		90°	
		0°	90°	0°	90°
10	40 kg	45 mm	200 mm		
	20 kg	120 mm	800 mm		
5	14 kg	170 mm	600 mm		
	7 kg	380 mm	1200 mm		

Basic specifications

Model	Stroke (mm)	Gear Ratio	Speed (mm/s)	Motor (W)	Max. Payload(kg)	
					Horizontal(0.3G)	Horizontal(0.5G)
MB80	50~5500	20	480	400	50	40
		10	960		40	30
		5	1920		18	15

MB80



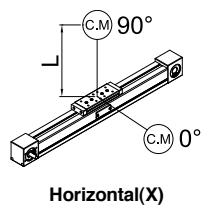
- Please contact us to change sensor or motor options.
- Customized tap or pin pitch on the bottom is available.

Weight & speed for each stroke

Stroke(mm)	1000	1100	1200	1300	1400	1500	1600	1700	1800	1900	2000	2500	3000	3500	4000	Gear ratio	Motor (W)	
Weight(kg)	20.9	21.7	22.5	23.3	24.1	24.9	25.7	26.5	27.3	28.1	28.9	32.9	36.9	40.9	44.9			20
Max. Speed (mm/s)																10		
																5		

Note) The weight of motor and reducer is not included.

Allowable overhang distance



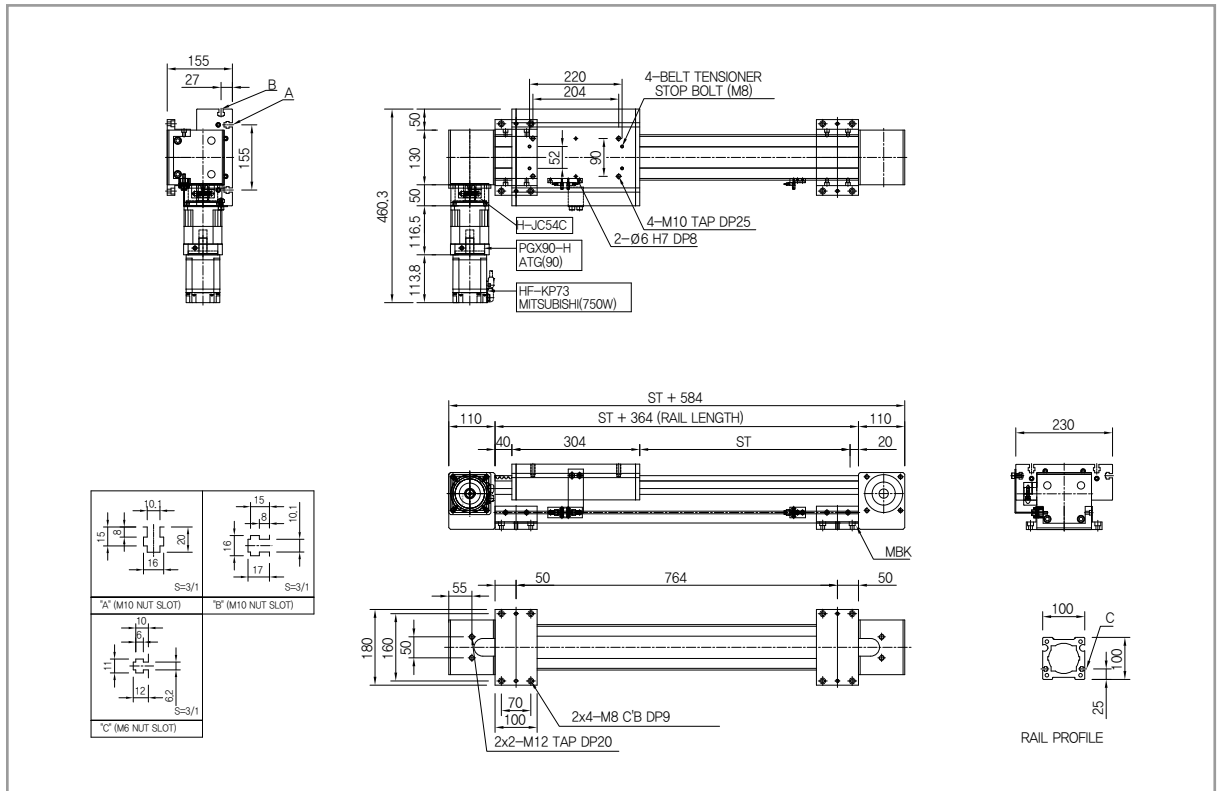
Gear Ratio	Payload	0°		90°	
		0°	90°	0°	90°
20	50 kg	20 mm	150 mm		
	25 kg	85 mm	600 mm		
10	40 kg	30 mm	150 mm		
	20 kg	110 mm	400 mm		
5	10 kg	240 mm	500 mm		
	5 kg	540 mm	1000 mm		

# MB 100

## Basic specifications

Model	Stroke (mm)	Gear Ratio	Speed (mm/s)	Motor (W)	Max. Payload(kg)	
					Horizontal(0.3G)	Horizontal(0.5G)
MB100	50~5500	20	640	750	90	80
		10	1280		70	60
		5	2560		20	18

## MB100



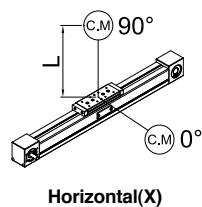
- Please contact us to change sensor or motor options.
- Customized tap or pin pitch on the bottom is available.

## Weight & speed for each stroke

Stroke(mm)	1000	1100	1200	1300	1400	1500	1600	1700	1800	1900	2000	2500	3000	3500	4000	4500	5000	Gear ratio	Motor (W)	
Weight(kg)	42.0	43.4	44.8	46.2	47.6	49.0	50.4	51.8	53.2	54.6	56.0	63.0	70.0	77.0	84.0	91.0	98.0			20
Max. Speed (mm/s)																		640		
																		1280		
																		2560		

Note) The weight of motor and reducer is not included.

## Allowable overhang distance



Gear Ratio	Payload	0°		90°	
		0°	90°	0°	90°
20	90 kg	35 mm	200 mm		
	45 kg	130 mm	800 mm		
10	70 kg	50 mm	150 mm		
	35 kg	170 mm	600 mm		
5	20 kg	300 mm	400 mm		
	10 kg	650 mm	800 mm		

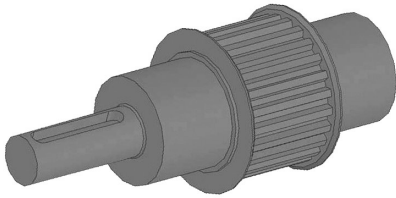


MB PULLEY OPTION

PULLEY OPTION

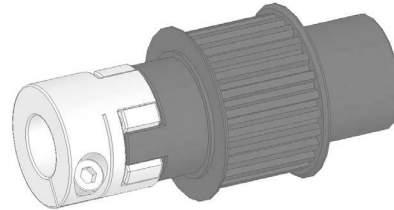
PSH Type

One body type pulley that having driving shaft



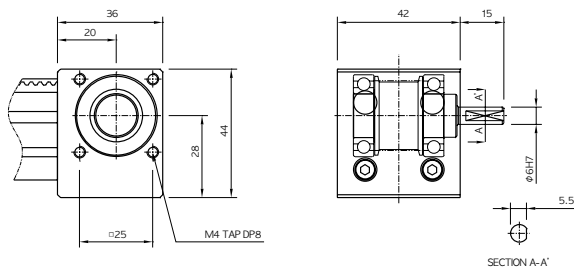
PCP Type

This type pulley is joined with Jaw-coupling directly and supplied with coupling.

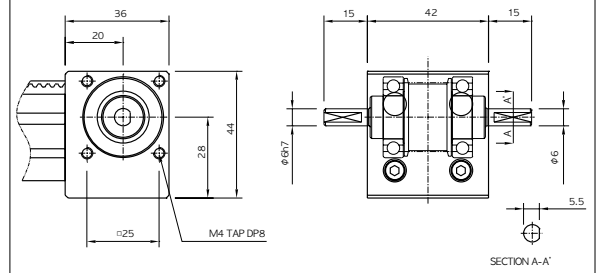


■ Pulley of MB30

PSH-S (MB30-18A)

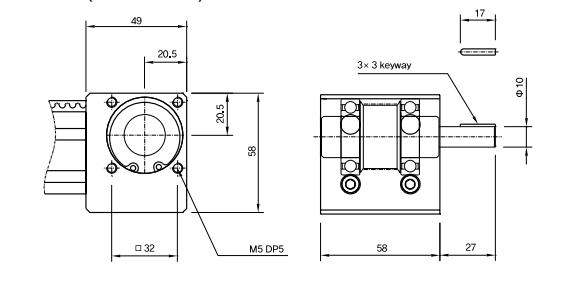


PSH-D (MB30-19A)

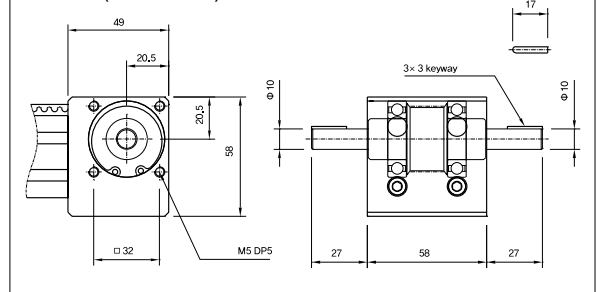


■ Pulley of MB40

PSH-S (MB40-18A)

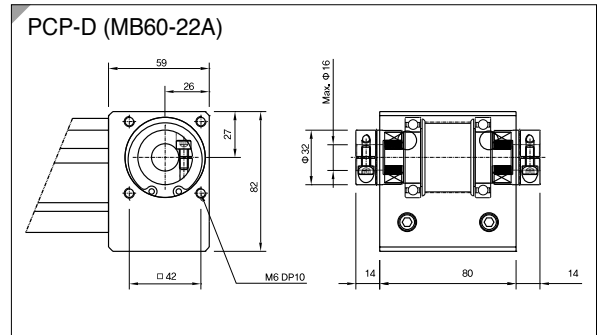
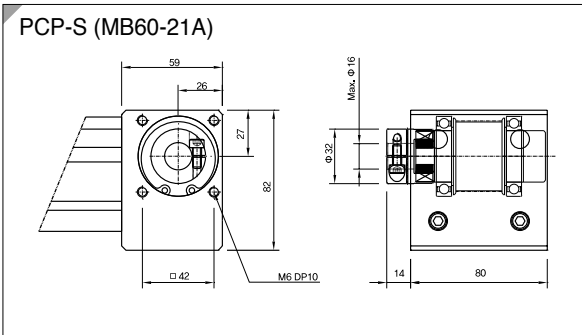
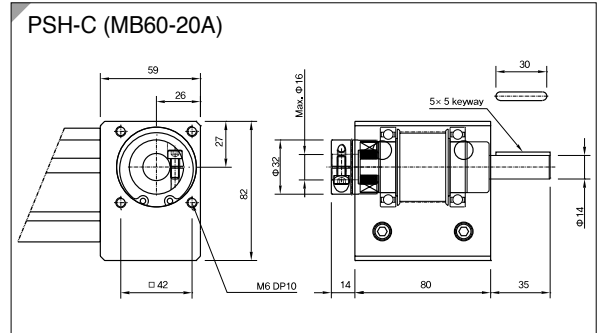
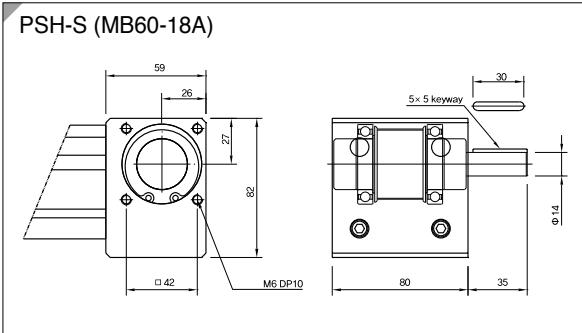


PSH-D (MB40-19A)

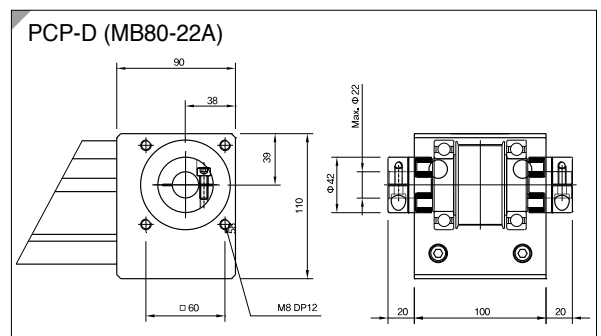
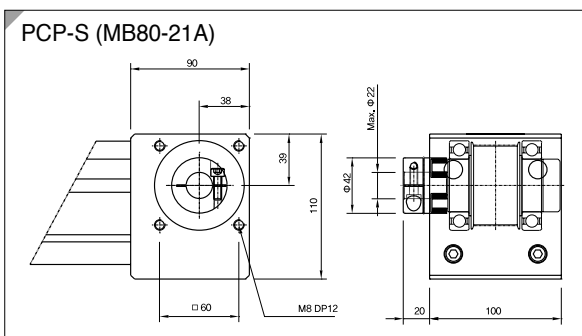
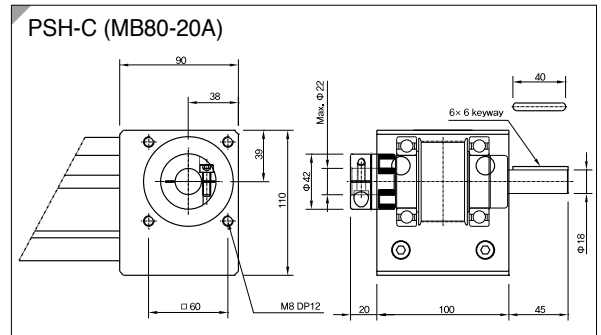
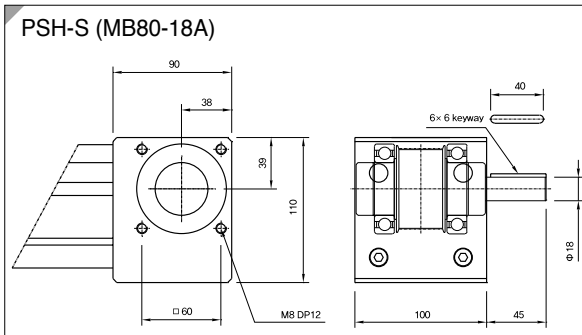


MB PULLEY OPTION

■ Pulley of MB60



■ Pulley of MB80



■ Pulley of MB100

